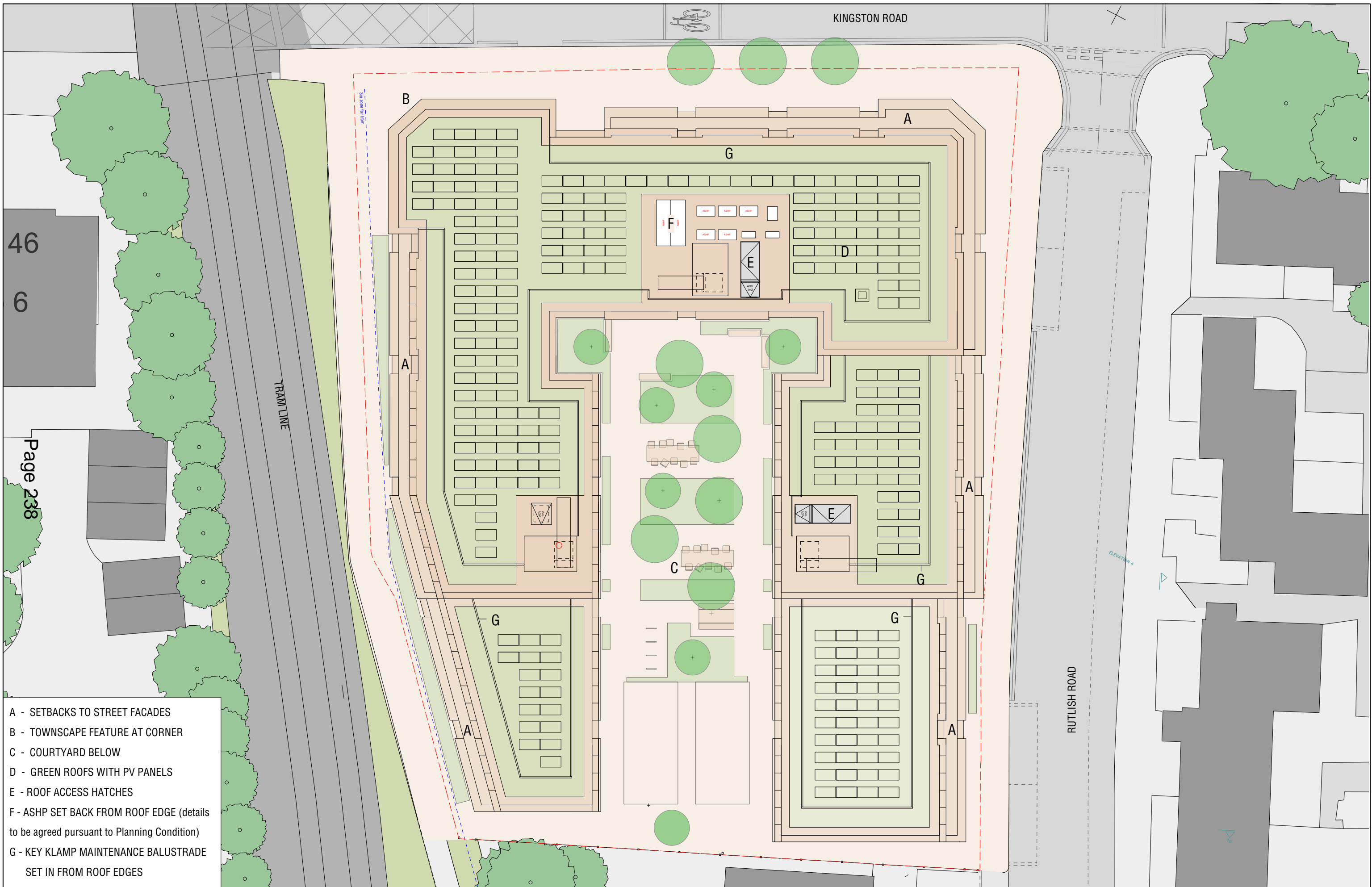


- A - ENTRANCE TO STUDENT ACCOMMODATION
- B - SECURE RECEPTION / PORTERS LODGE
- C - WIDENED FOOTWAYS
- D - LANDSCAPED COURTYARD
- E - LIFT / STAIR CORE
- F - RETAIL
- G - COMMON ROOM
- H - STUDENT CYCLES
- J - POST ROOM DELIVERIES
- K - WCA STUDIO
- L - DOUBLE YELLOW LINE AREA FOR SERVICING
- M - NEW 2.4m HIGH FENCE TO MATCH EXISTING



PROPOSED GROUND FLOOR PLAN



46
6

Page 238

- A - SETBACKS TO STREET FACADES
- B - TOWNSCAPE FEATURE AT CORNER
- C - COURTYARD BELOW
- D - GREEN ROOFS WITH PV PANELS
- E - ROOF ACCESS HATCHES
- F - ASHP SET BACK FROM ROOF EDGE (details to be agreed pursuant to Planning Condition)
- G - KEY KLAMP MAINTENANCE BALUSTRADE SET IN FROM ROOF EDGES



0 5 10 15 M

PROPOSED ROOF PLAN

Stephen Marshall
(Urbanism) Ltd
Gainsborough Studios
1 Poole Street, London N1 5EB
T: 020 7033 3130 F: 020 7739 0607

PROJECT: Kingston Road, Wimbledon
TITLE: Plan
DATE: January 2023
SCALE: 1:250 @ A3

P23



46
6

TRAM LINE

Page 239

- K - STUDENT KITCHEN
- M - ACCESSIBLE STUDIO
- N - NON ENSUITE ROOM
- O - OBSCURED GLAZING
- S - STUDIO

Stephen Marshall
(Urbanism) Ltd
Gainsborough Studios
1 Poole Street, London N1 5EB
T: 020 7033 3130 F: 020 7739 0607



0 5 10 15 M

PROPOSED 2ND FLOOR PLAN

PROJECT: Kingston Road, Wimbledon
TITLE: Plan
DATE: January 2023
SCALE: 1:250 @ A3

P19

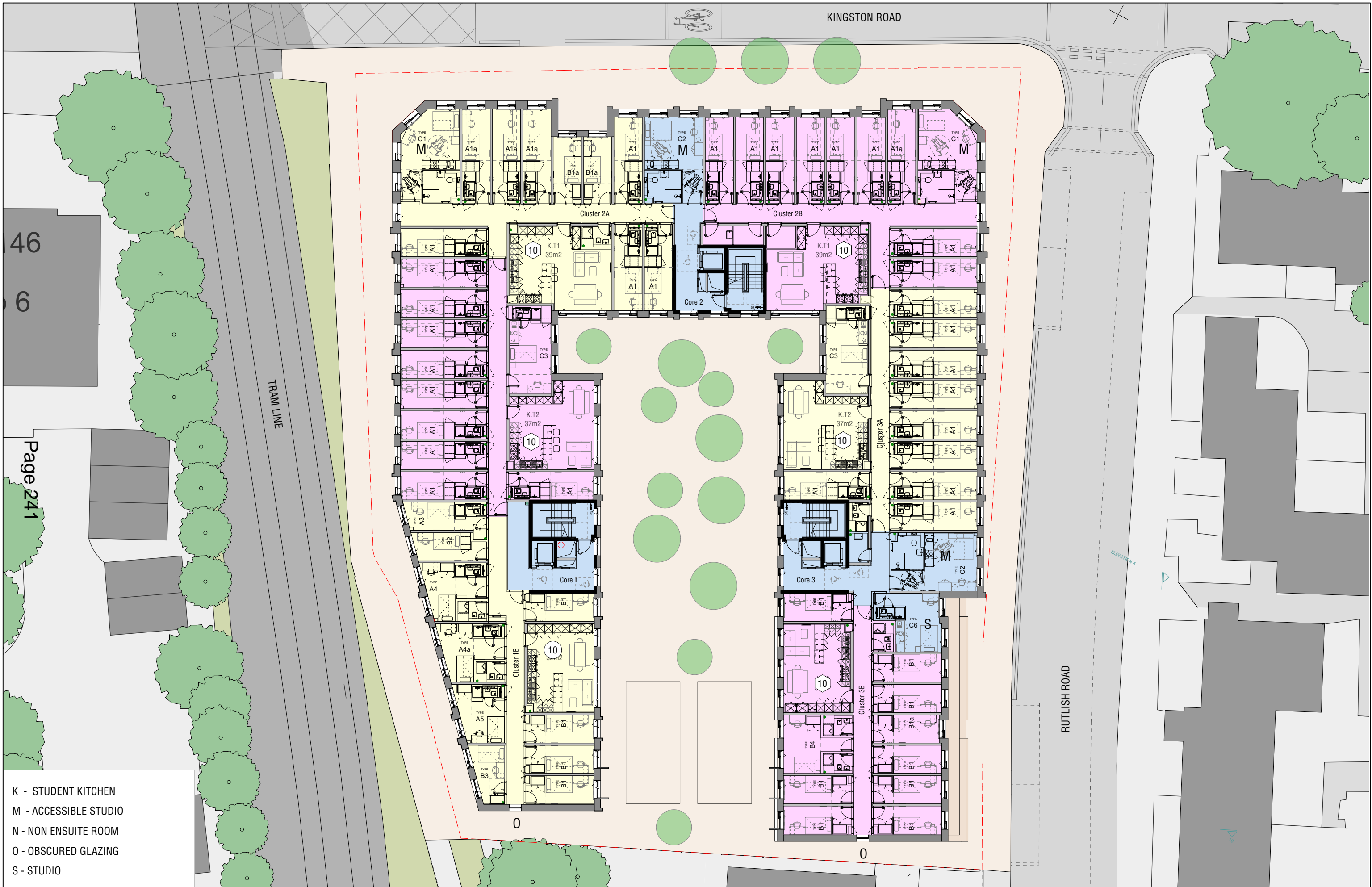


A - ENTRANCE TO STUDENT ACCOMMODATION
 B - COURTYARD WITH TREES

C - SETBACK AT ROOF
 D - TRAM LINE
 E - CHAMFERED CORNERS



SITE PLAN



46
6

Page 241

- K - STUDENT KITCHEN
- M - ACCESSIBLE STUDIO
- N - NON ENSUITE ROOM
- O - OBSCURED GLAZING
- S - STUDIO

Stephen Marshall
 (Urbanism) Ltd
 Gainsborough Studios
 1 Poole Street, London N1 5EB
 T: 020 7033 3130 F: 020 7739 0607



0 5 10 15 M

PROPOSED 3RD FLOOR PLAN

PROJECT: Kingston Road, Wimbledon
 TITLE: Plan
 DATE: January 2023
 SCALE: 1:250 @ A3

P20

Consultation on plans for

144 Kingston Road

Former White Hart Public House



Dear Neighbour

We are writing to let you know about plans being prepared for the redevelopment of 144 Kingston Road (the former White Hart public house) to provide a hall of residence for the nearby Wimbledon College of Arts, which is part of University of the Arts London (UAL).

We will be holding two public consultation events at the College - details of which can be found overleaf. We want to bring life and activity to this underutilised site and have been working with the Council and the local community to understand what our development should include.



Imagery ©2022 Google, Map data ©2022

Site area

Our vision

Our plans for developing this site include:



Providing a new hall of residence to support a College that has been in Wimbledon since 1890



Widening the footpath on Kingston Road, providing new public spaces and an upgraded footpath



Tree planting and landscaping on Kingston Road



Potential for an independent shop and/or café to support local needs

Join the conversation

We would like to hear your thoughts to help inform the proposals for 144 Kingston Road. We hope to see you at our public consultation events on:

 **Tuesday 6 December 3pm – 7pm**

 **Wednesday 7 December 5pm – 8pm**



Wimbledon College of Arts
Merton Hall Road,
London SW19 3QA

This venue is wheelchair accessible.


Alternatively, scan the QR code to visit our website where you will be able to view the materials we will share at the event, and fill out an online feedback form to let us know what you think of our plans.



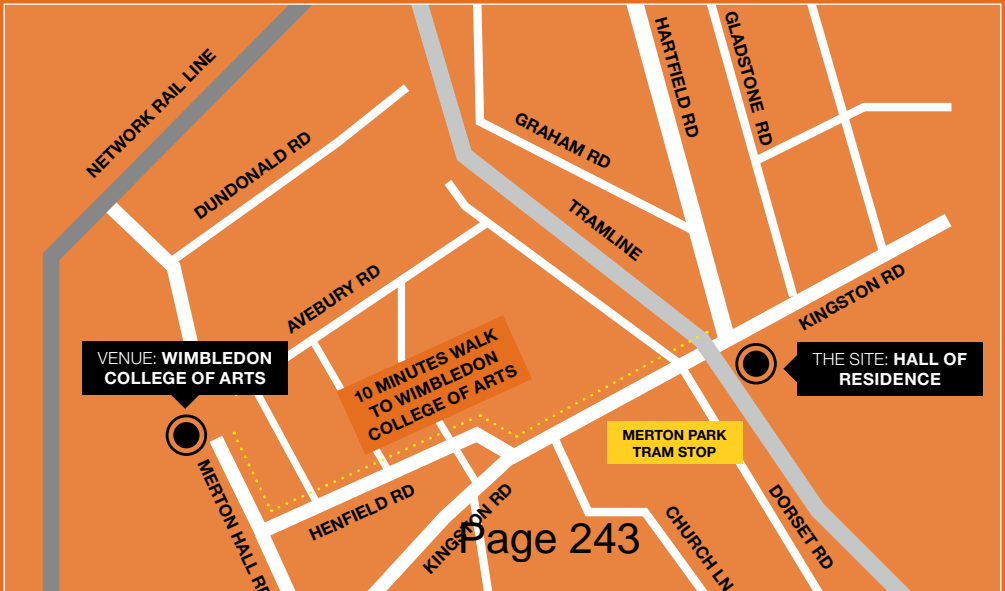
Get in touch

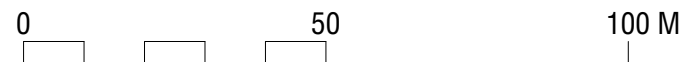
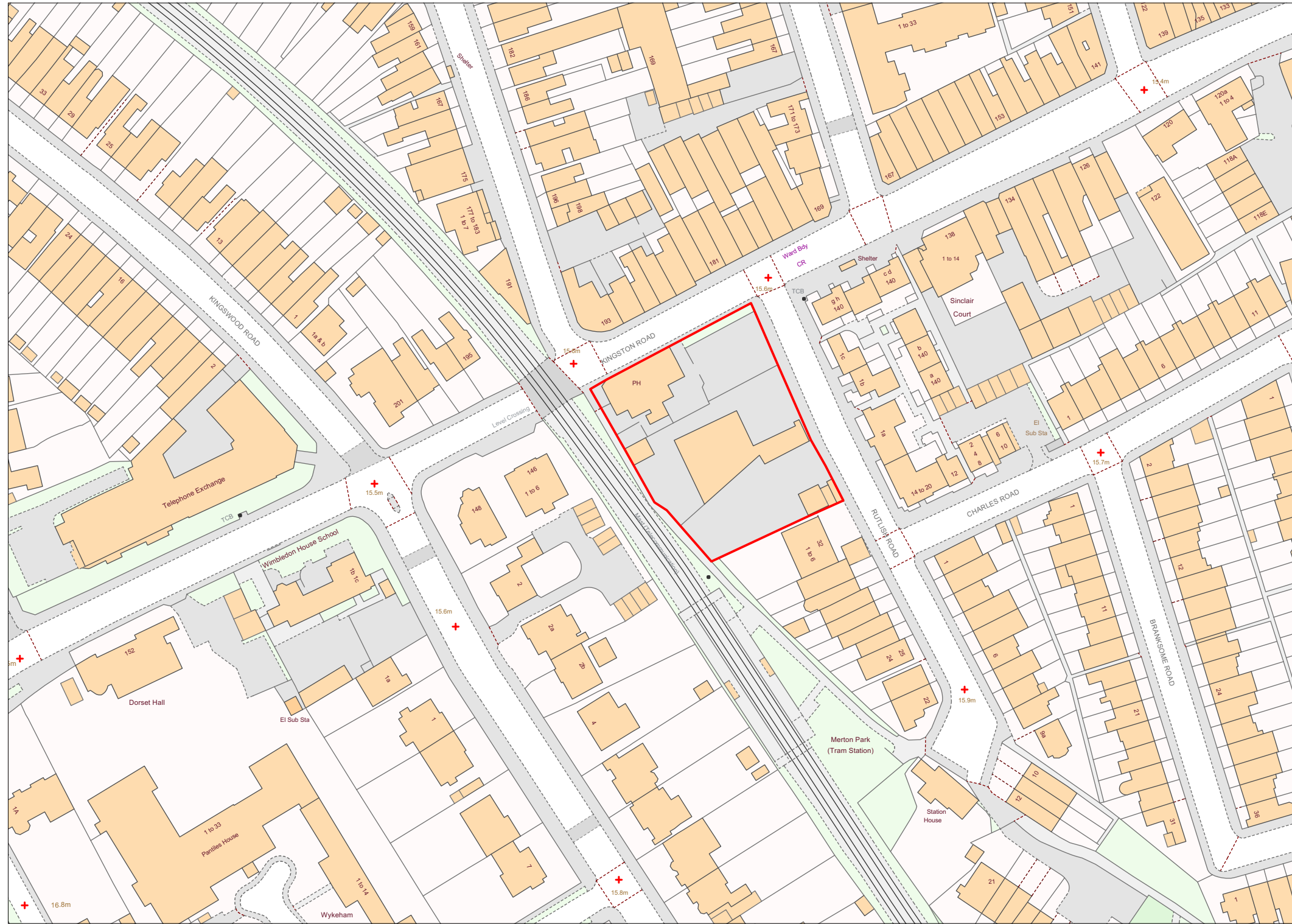
To speak to a member of the project team to request an information pack and feedback form via post, or share any questions or comments, please use our contact details below, and sign up to our mailing list on our website to be kept up to date on the consultation.

 144kingstonroad@kandaconsulting.co.uk

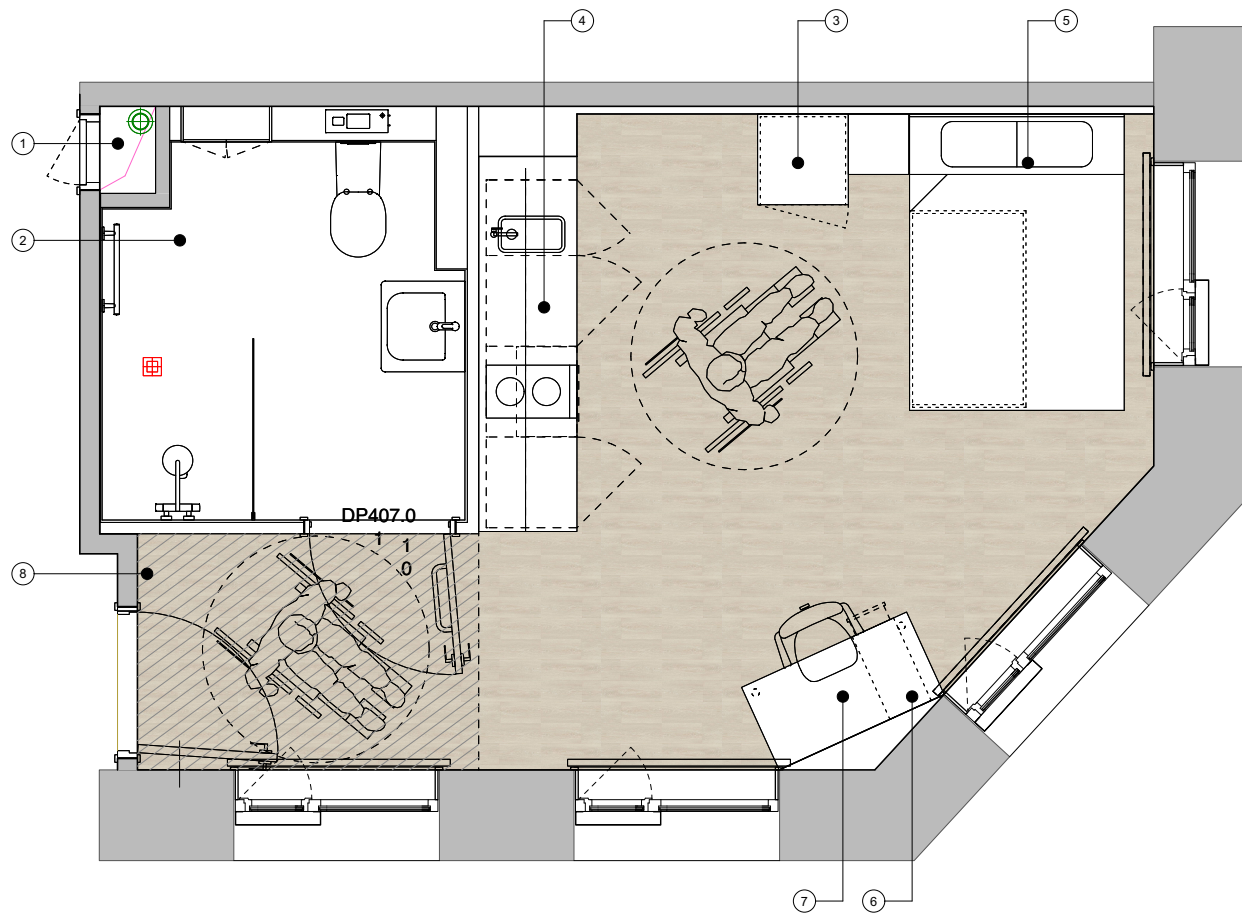
 **020 3900 3676**

 www.144kingstonroad.co.uk

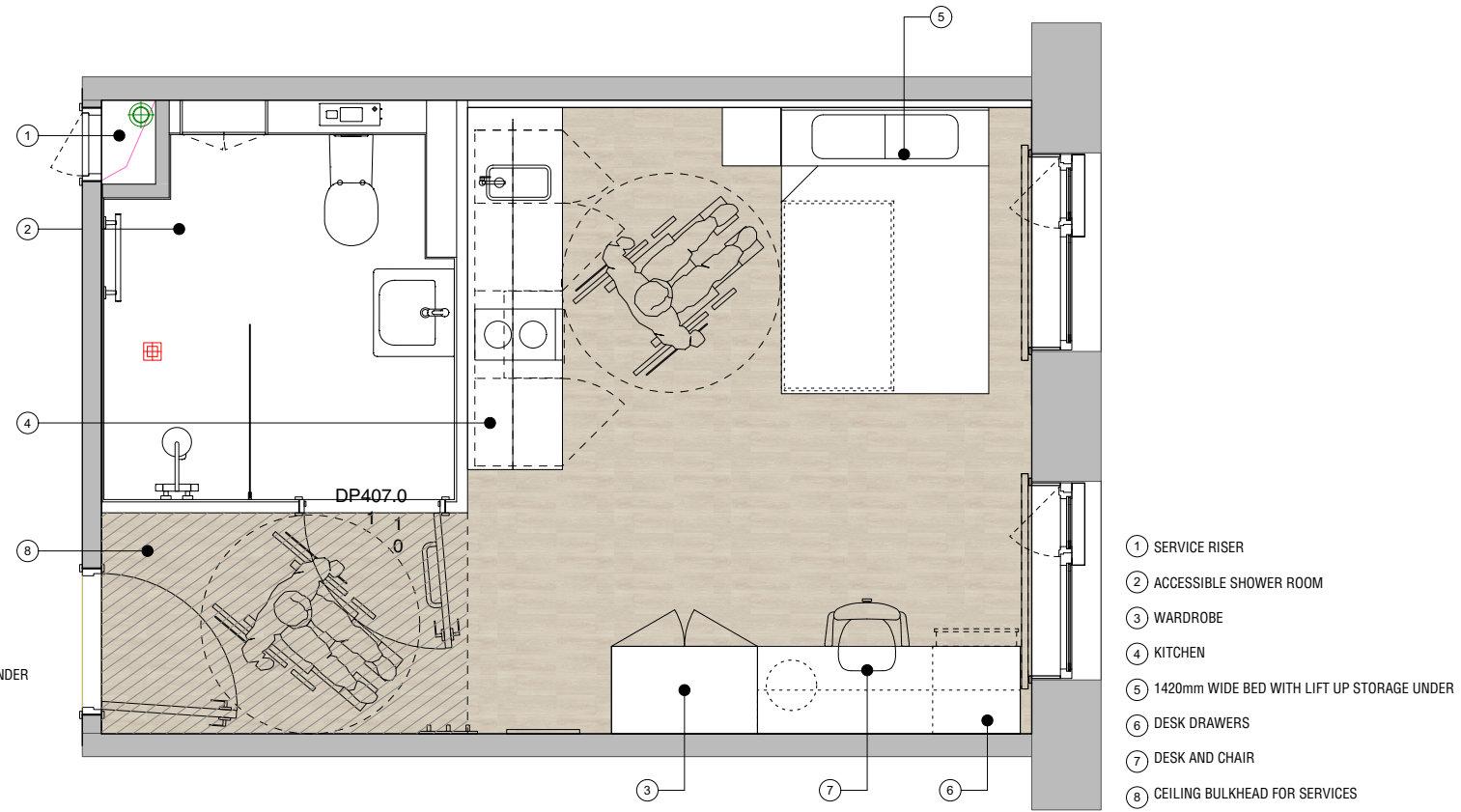




LOCATION PLAN



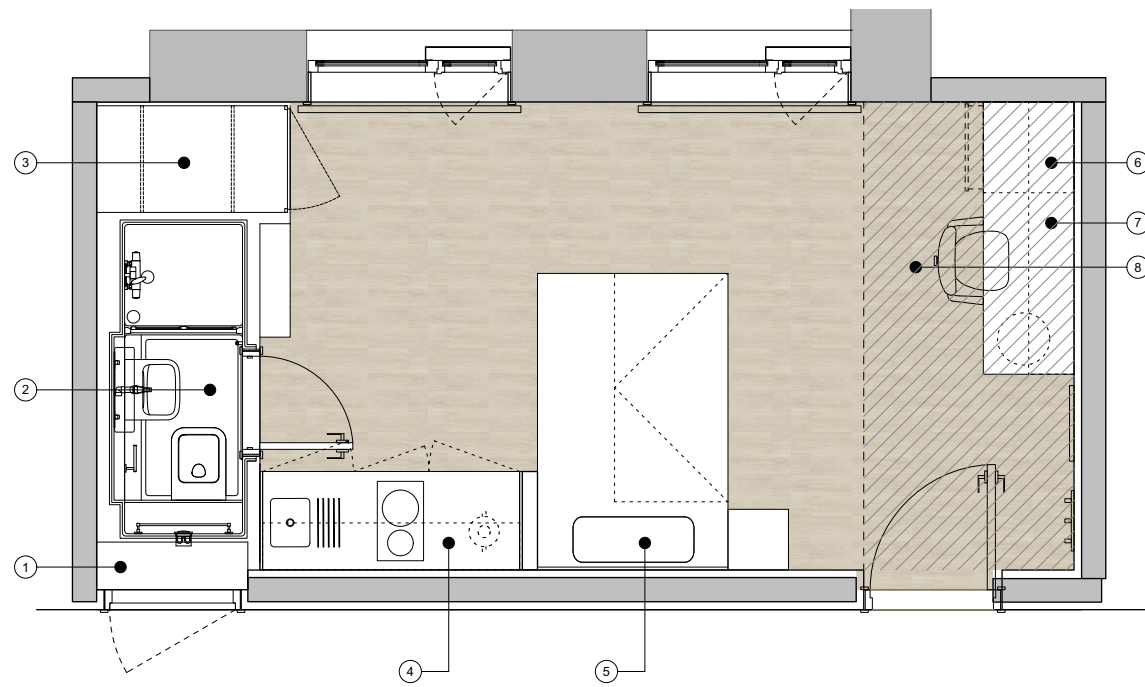
- ① SERVICE RISER
- ② ACCESSIBLE SHOWER ROOM
- ③ WARDROBE
- ④ KITCHEN
- ⑤ 1420mm WIDE BED WITH LIFT UP STORAGE UNDER
- ⑥ DESK DRAWERS
- ⑦ DESK AND CHAIR
- ⑧ CEILING BULKHEAD FOR SERVICES



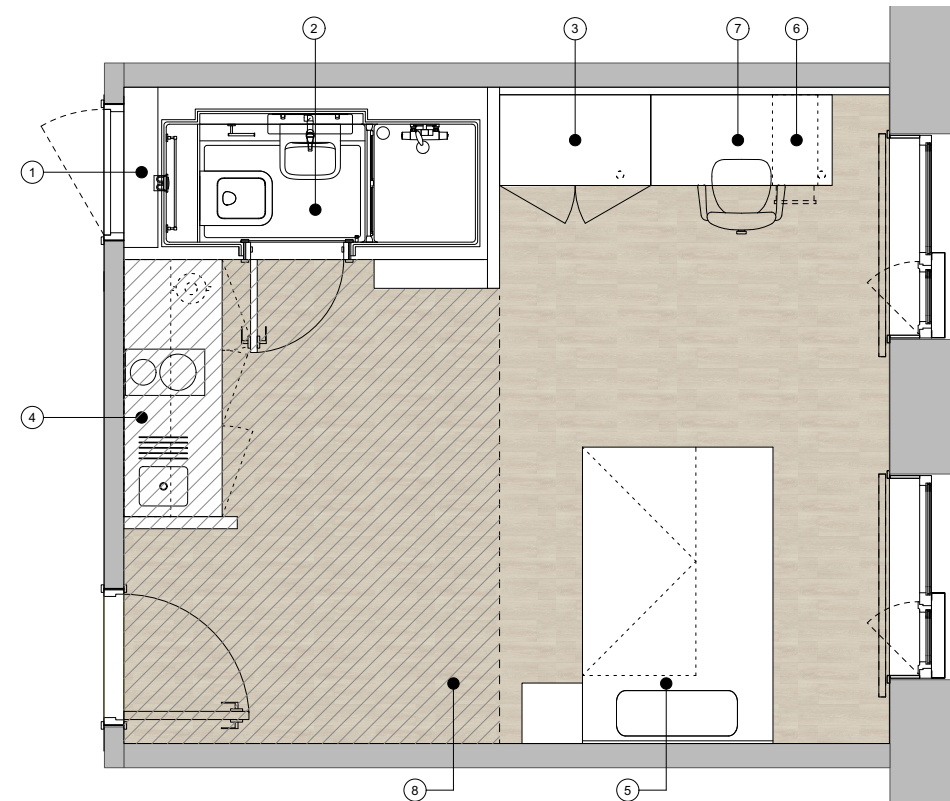
- ① SERVICE RISER
- ② ACCESSIBLE SHOWER ROOM
- ③ WARDROBE
- ④ KITCHEN
- ⑤ 1420mm WIDE BED WITH LIFT UP STORAGE UNDER
- ⑥ DESK DRAWERS
- ⑦ DESK AND CHAIR
- ⑧ CEILING BULKHEAD FOR SERVICES

ROOM TYPE C1 - ACCESSIBLE STUDIO (ADAPTED VERSION SHOWN)

ROOM TYPE C2 - ACCESSIBLE STUDIO (ADAPTED VERSION SHOWN)



- ① SERVICE RISER
- ② SHOWER ROOM
- ③ WARDROBE
- ④ KITCHEN
- ⑤ 1420mm WIDE BED WITH LIFT UP STORAGE UNDER
- ⑥ DESK DRAWERS
- ⑦ DESK AND CHAIR
- ⑧ CEILING BULKHEAD FOR SERVICES



- ① SERVICE RISER
- ② SHOWER ROOM
- ③ WARDROBE
- ④ KITCHEN
- ⑤ 1420mm WIDE BED WITH LIFT UP STORAGE UNDER
- ⑥ DESK DRAWERS
- ⑦ DESK AND CHAIR
- ⑧ CEILING BULKHEAD FOR SERVICES

ROOM TYPE C3 - STUDIO

ROOM TYPE C4 - STUDIO

INDICATES CEILING BULKHEAD

This page is intentionally left blank